



Expert Guide

Step by step guide to the administration of canine red cell products

As the UK's trusted pet blood banking charity, we provide quick access to high quality products as well as expert advice and guidance when you need it most.

We hope this guide is useful.
If you have any further queries, please contact our team.



01509 232 222



[petbloodbankuk.org](https://www.petbloodbankuk.org)

Contents

Equipment 4

Warming 5

Warming the red cell unit

Preparation 6

Preparing the red cell unit

Attaching the unit 9

Filtration of blood products 10

Equipment

- Unit of Packed Red Blood Cells (PRBC) or Fresh (FWB) or Stored Whole Blood (SWB) removed from the refrigerator
- Zip lock bag
- Clean bowl/tray to act as a water bath to warm the product
- Thermometer
- Blood administration set
- Drip stand
- Examination gloves
- Recipient prepared with central or peripheral IV access. The catheter should have been flushed with normal 0.9% saline and capped with a sterile bung
- Alcohol wipes

Preparation

Step 2

Once warmed, the unit should be removed from the plastic zip lock bag and hung on a drip stand. Wearing gloves, access one of the administration ports on the blood unit by tearing the protective cover using aseptic technique.



Step 2

Step 3

Remove a blood administration set from its outer packaging and prepare for use by closing off the in-line C clamp (where present) and the drip wheel.

Note: A standard blood administration set will usually administer 20 drops/ml



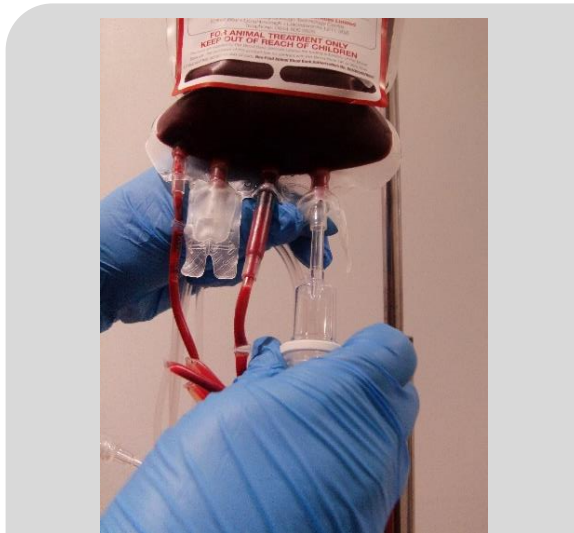
Step 3

Preparation

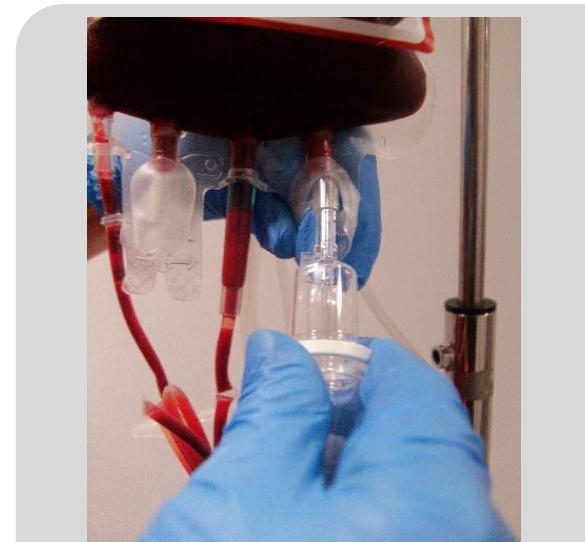
Steps 4 and 5

The insertion spike is unsheathed in an aseptic manner and pushed into the unit via the revealed administration port ensuring it is fully inserted to reach the blood.

The red cell unit is now breached and must be discarded after 4 hours.



Step 4



Step 5

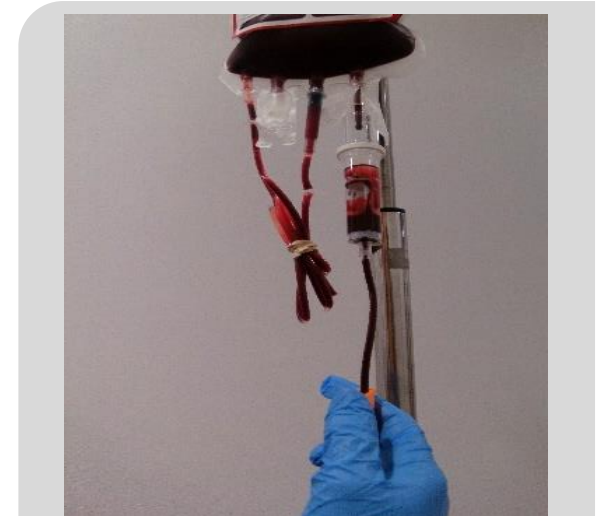
Preparation

Steps 6, 7, 8 and 9

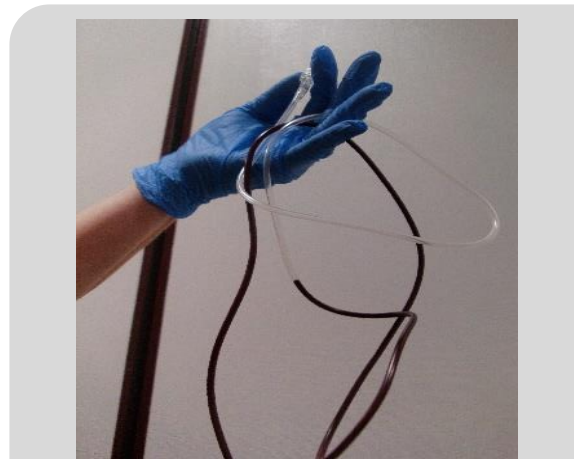
Fill the drip chamber to approximately half to two thirds taking care not to damage the chamber filter. Ensure the fill level is above the filter but not so full that the drip rate cannot be observed. Open any clamps on the administration line. Slowly release the drip wheel to prime the entire length of the administration line to the very end. Do not remove the cover.



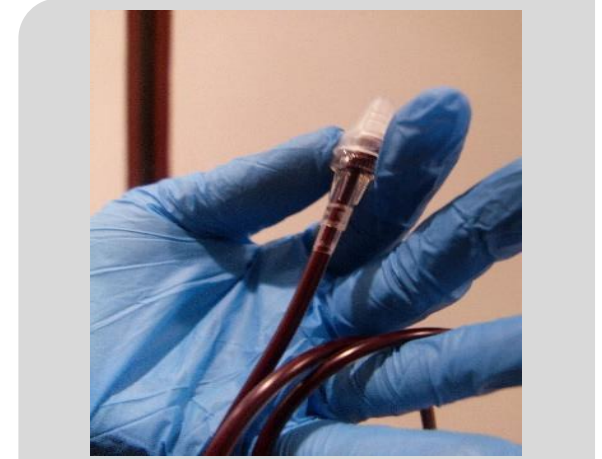
Step 6



Step 7



Step 8



Step 9

Attaching the unit

Step 10

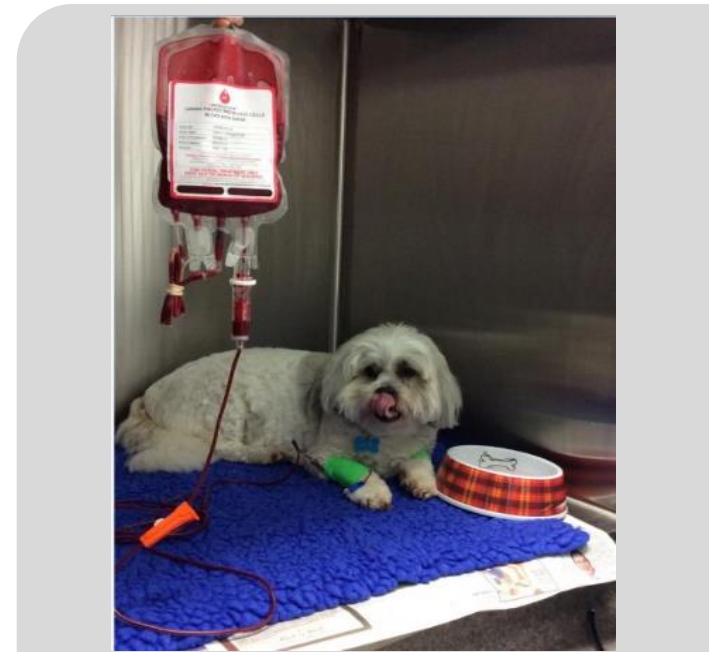
Always keep the blood administration set off the floor.



Step 10

Step 11

Once primed and with no air bubbles present in the administration line, the unit is ready to aseptically attach to the patient's disinfected and flushed intravenous catheter and transfuse.



Step 11

Filtration of blood products

All blood products must be administered through a microaggregate filter (normally 170-260 micron) to facilitate removal of any small clots and other debris. These filters may be an integral part of the lines, for example in a blood administration set or may be attached between the blood product and the patient if the blood is being delivered from a syringe (Fig.1).

This is more common with felines and small canine patients where blood volumes are typically small. It may also be used where slower infusion rates are to be used to avoid the blood remaining out of the fridge for greater than 4 hours and reduce wastage of any remaining blood. Refer to our **Blood Unit Separation Guide** for instructions on how to separate blood units into smaller volumes.

Notes on the SA150 Blood Filter

1. Pet Blood Bank now supplies the SA150 filter (Fig.2) in place of the Hemo-nate filter (Fig. 1)
2. The blood filters can be used to filter 250ml of blood product.
3. A new filter must be used for each new unit.
4. The filter should be discarded after 4 hours

Pet Blood Bank advises that a new blood administration set is used for each new unit and that these are also discarded after 4 hours.



Fig. 1



Fig. 2 SA150 blood filter

**Thank you for using this guide.
We hope you found it useful.**

To make transfusion medicine as easy for you as possible, we also provide:

- Blood deliveries around the clock
- Quality tested products that reduce the risk of complications
- Advice on cross matching and selecting blood products
- Administrative equipment

For more information about our blood products,
or to get further advice, please contact us



01509 232 222



petbloodbankuk.org

